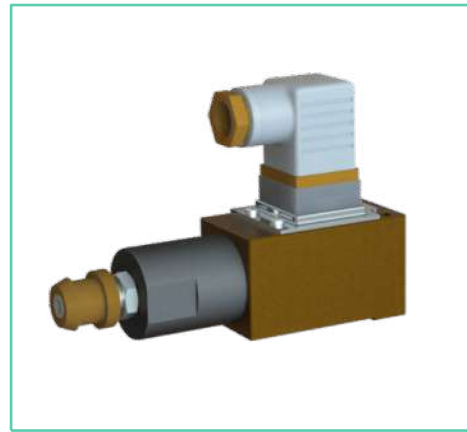
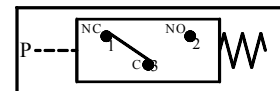


## Hydro-Electric Pressure Switch

Spring loaded sealed piston construction. Encapsulated design for protection against dirt.  
Plug-in connector conforming to DIN 43650 / ISO 4400 for electrical connection.



Graphic Symbol



## Pressure Setting Ranges

Max. Operating Pressure Kgf/cm <sup>2</sup>	Pressure Setting Range Kgf/cm <sup>2</sup>
A : 40	5 to 40
B : 100	12 to 100
C : 200	20 to 200
D : 350	30 to 350

## Model Number Designation

F-	YS	G	-A	-20
Special Seals **	Series Number	Type of Mounting	Working Pressure Kgf/cm <sup>2</sup>	Design Number *
<b>F:</b> Special Seals For Phosphate Ester Type Fluids. (Omit if not required)	<b>YS:</b> YIL Pressure Switch	<b>G:</b> Sub plate Mounting	<b>A:</b> 5~40 <b>B:</b> 12~100 <b>C:</b> 20~200 <b>D:</b> 30~350	<b>20</b>

\* Design numbers subjected to change . But installation dimensions remains as shown.

\*\* Before ordering the Special Seals, consult YUKEN INDIA LTD.

## Instructions

### Pressure Adjustment

Loosen the locknut, then turn the pressure adjustment screw slowly clockwise for higher pressures or anti-clockwise for lower pressures. Retighten the locknut after getting required setting.

## Mounting Bolts

Model Number	Socket Head Cap Screw	Qty.	Bolt Kit Ordering Code
YSG -※-20	M5 x 50Lg.	2	BK-YSG-01-20

## Spare Parts List

### List of Seals

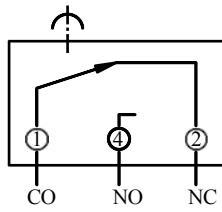
SL.No.	Part Name	Name of Part	Qty.
1	SO-NB-P14	O-Ring	1
2	SO-NB-P9	O-Ring	1
3	OD006005200171A	Step Seal	1

Note : When ordering the seals, please specify the seal kit number KS-YSG-20.

### DIN Connector

When ordering the DIN Connector as a spare part, please specify HD-309/S.

## Connection Diagram

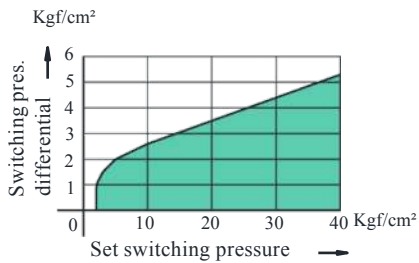


## Pressure and Micro-Switch Contacts

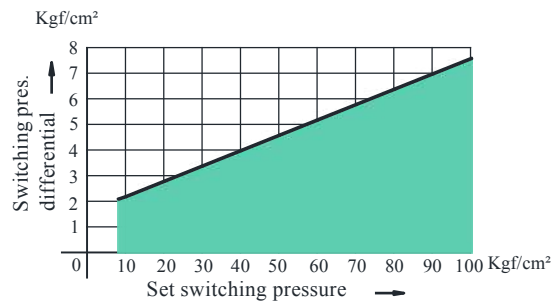
Pressure	Micro Switch Contact Point	Solenoid
Under the Setting Pressure		ENERGIZED
Above the Setting Pressure		ENERGIZED

## Switching Pressure Differential

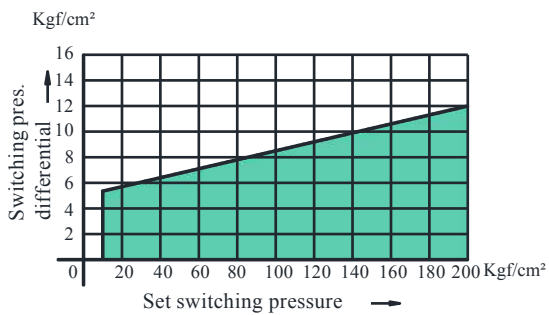
### YSG-A-20



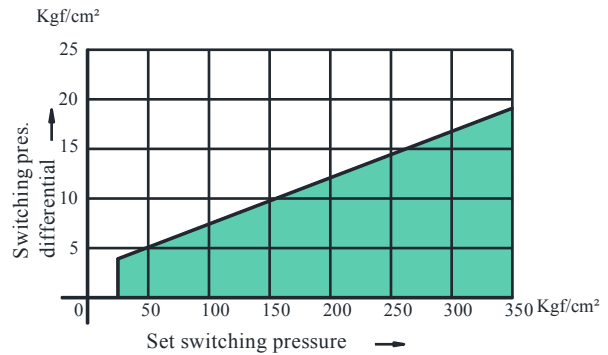
### YSG-B-20



### YSG-C-20

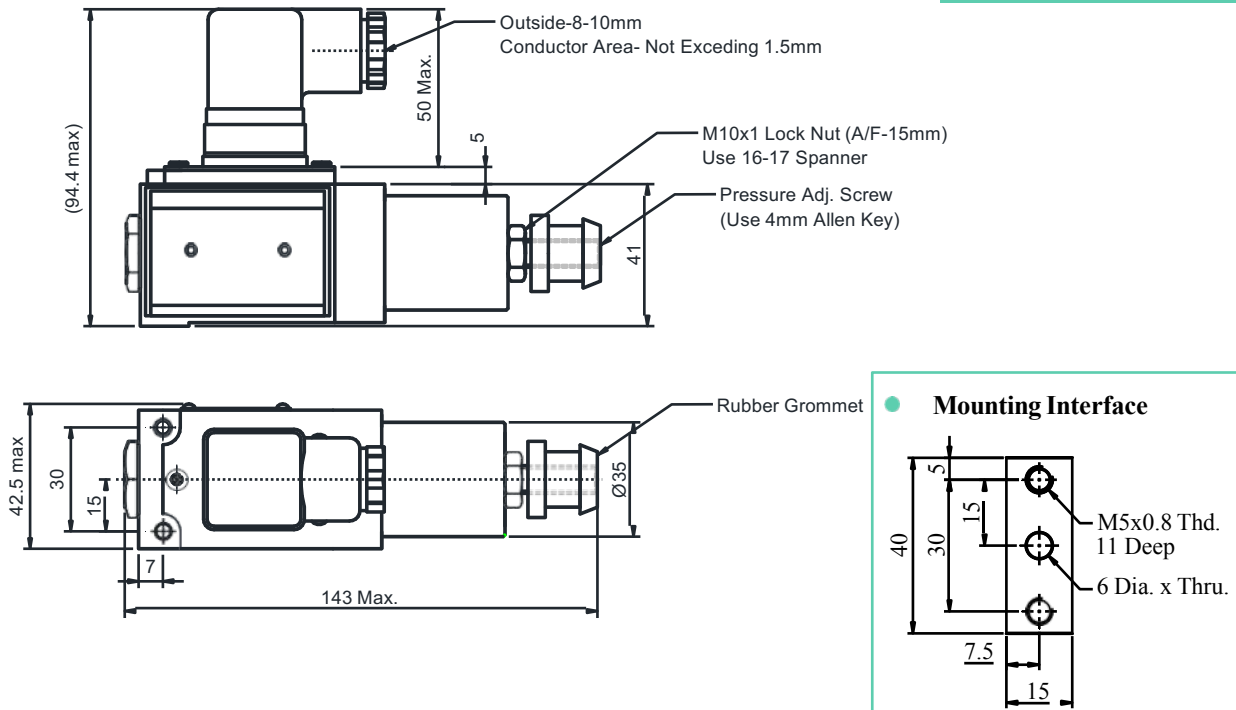


### YSG-D-20



## ● YSG -※-20

DIMENSIONS IN MILLIMETRES



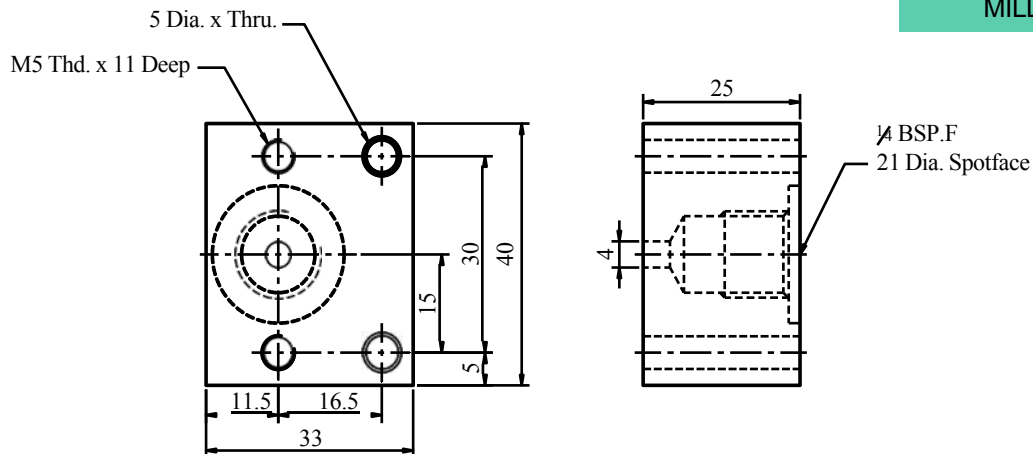
C  
Hydro-Electric Pressure Switch

### ■ Sub-Plate

Model Number	Sub-Plate	Piping Size	Mass Kg.
YSG -※-20	YSGM-01-10	1/4" BSP.F	0.24

### ● Sub-plate: YSGM-01-10

DIMENSIONS IN MILLIMETRES



Note: Sub-Plate to be ordered separately Ordering code for sub plate is YSGM-01-10.