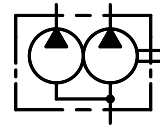


HPV22M SERIES – HIGH PRESSURE HIGH SPEED DOUBLE PUMPS

These double pumps consist of two HPV2 series single pumps combined in tandem within a single housing and driven by a common shaft. Fluid delivered from the two-separate ports can be either supplied to separate or common circuits. These HPV pumps are designed for high-pressure functions. Suitable for mobile applications like Drill rigs, Railways & Construction Equipments.



Graphic Symbol



Specifications

Model Number	Series	Geometric Displacement cm ³ /rev.		Max. Oper. Pressure Kgf/cm ²	Output Flow and Input Power	Shaft Speed Range r/min.		Mass (Approx.) Kg.	
		1 st Section	2 nd Section			Max.	Min.	Flange Mounting	Foot Mounting
HPV22M	03	10.8	10.8	140	Ref. Page Nos. 179, 180, 181 & 182	2800	400	26.0	29.3
	05	17.2	17.2						
	06	21.3	21.3						
	08	26.4	26.4						
	10	34.1	34.1						
	12	37.1	37.1						
	14	46.0	46.0						
	15	50.5	50.5						
	17	58.3	58.3						
	20	63.8	63.8						
	22	70.3	70.3						
	25	79.3	79.3						
		28	88.8	88.8		210	2500		
	31	100.0	100.0						

Model Number Designation

HPV22M	-14	-12	-F	-R	A	A	A	-U0	-K1	-10
Model Number	Series		Type of Mounting	Direction of Rotation	1 st Section Discharge Port Position	2 nd Section Discharge Port Position	Suction Port Position	Mounting W/ Connection Variables	Type of Shaft	Design * Number
	1 st Section	2 nd Section								
HPV22M	03 05 06 08 10 12 14 15 17 20 22 25 28 31	03 05 06 08 10 12 14 15 17 20 22 25 28 31	F: Flange Mtg. L: Foot Mtg.	R: Clockwise (Normal) L: Anti-Clockwise				M0, M1, M2, M3- Metric port connection (Refer table below) U0, U1, U2, U3- UNC port connection (Refer table below)	K1- Keyed (no SAE) S1- Splined (SAE-B) S2- Splined (SAE-BB)	10

* Design numbers subject to change from 10 to 19, but installation dimensions remain as shown.

* For instructions regarding changing the port positions, consult CNIP INDIA LTD.

Mounting W / connection variables

Model Number	Mounting Type	1 st Discharge Port connection (D1)	2 nd Discharge Port connection (D2)	Suction Port connection (S)
HPV22M	M0	1"	1"	3"
	M1	1"	3/4" *1	3"
	M2	1"	1"	2 1/2" *2
	M3	1"	3/4" *1	2 1/2" *2
	U0	1"	1"	3"
	U1	1"	3/4" *1	3"
	U2	1"	1"	2 1/2" *2
	U3	1"	3/4" *1	2 1/2" *2

*1 For 46 cm³/rev. max.

*2 For 126 cm³/rev. max. The larger cartridge should always be in 1st Section (when compared with Second Section).

Cartridge Kit Model Number

1st Section Discharge Port

CHPV22M	-14	-D1	-R	-10
Model Number	Nominal Delivery	Discharge Port	Shaft Rotation	Design No.
	1 st Section			
CHPV22M	03 05 06 08 10 12 14 15 17 20 22 25 28 31	D1: 1 st Section Discharge Port	R: Clockwise (Normal) L: Anti-Clockwise	10

2nd Section Discharge Port

CHPV22M	-14	-D2	-R	-10
Model Number	Nominal Delivery	Discharge Port	Shaft Rotation	Design No.
	2 nd Section			
CHPV22M	03 05 06 08 10 12 14 15 17 20 22 25 28 31	D2: 2 nd Section Discharge Port	R: Clockwise (Normal) L: Anti-Clockwise	10

* For instructions regarding replacing cartridge kit, consult CNIP INDIA LTD.

Hydraulic Fluids

Suction Pressure

Suction line pressure limit $-0.20\text{Kg}/\text{cm}^2$ to $+0.30\text{Kg}/\text{cm}^2$

Cleanliness

Contamination level should be within NAS class 9. The return line must have a line type filter of under $10\mu\text{m}$ or there should be an offline/independent filtration unit in the system.

Alignment of Shaft

Employ a flexible coupling whenever possible & avoid stress from bending or thrust. Maximum permissible misalignment is less than $0.1\text{mm}(0.004\text{Inches})$ TIR & maximum permissible misangular is less than 0.2° .

Instructions

Precautions at starting

At an initial operation or at an operation after a long rest, the pump may have difficulty in sucking up fluids. In such cases, an air bleed valve should be installed before hand in the discharge side (Model No.ST1001-※-10※), or discharge air by slightly slackening the connection on the discharge side. At starting, operate the pump intermittently as far as possible with no load.

Other Precautions

If a pump is used at speed below 1200 r/min, install the pump with the suction port upside so that the pump can suck up fluid easily at starting.

Flanges

Note: Please refer page no.178 for flange details.

Spare Parts List

List of Seals

Sl. No.	Name of Part	Part Number	Qty.
1	O-Ring	PKH4-0205	2
2	O-Ring	PKH4-0206	2
3	O-Ring	PKH4-0207	1
4	O-Ring	PKH4-0211	1
5	Backup-Ring	PKH4-0184	2
6	Oil Seal (NOK)	25.4x38.1x6.35	1

Note : When ordering the seals, please specify the seal kit number KS-HPV22-10.

Foot Mounting Parts

Sl. No.	Name of Part	Part Number	Qty.
1	Mounting Bracket	PK2-10513-8	1
2	Socket Head Cap Screw	M12 x 35Lg.	2
3	Spring Washer	WS-A-12	2

Note : When ordering the Foot Mounting Parts, please specify the Kit number HPV22-L-10.

Typical pump characteristics curves

Ref. Page Nos. 179, 180, 181 & 182.

Cartridge Kit Model Number

Pump Model Numbers	Cartridge Kit Number #	
	Small Volume Pump	Large Volume Pump
HPV22M-*-06-※-RAAA-※-※-10	CHPV22M-06-D2-L-10	CHPV22M-*-D1-R-10
HPV22M-*-10-※-RAAA-※-※-10	CHPV22M-10-D2-L-10	
HPV22M-*-14-※-RAAA-※-※-10	CHPV22M-14-D2-L-10	
HPV22M-*-17-※-RAAA-※-※-10	CHPV22M-17-D2-L-10	
HPV22M-*-22-※-RAAA-※-※-10	CHPV22M-22-D2-L-10	
HPV22M-*-28-※-RAAA-※-※-10	CHPV22M-28-D2-L-10	
HPV22M-*-31-※-RAAA-※-※-10	CHPV22M-31-D2-L-10	

* For instructions regarding replacing cartridge kit, consult CNIP INDIA LTD.

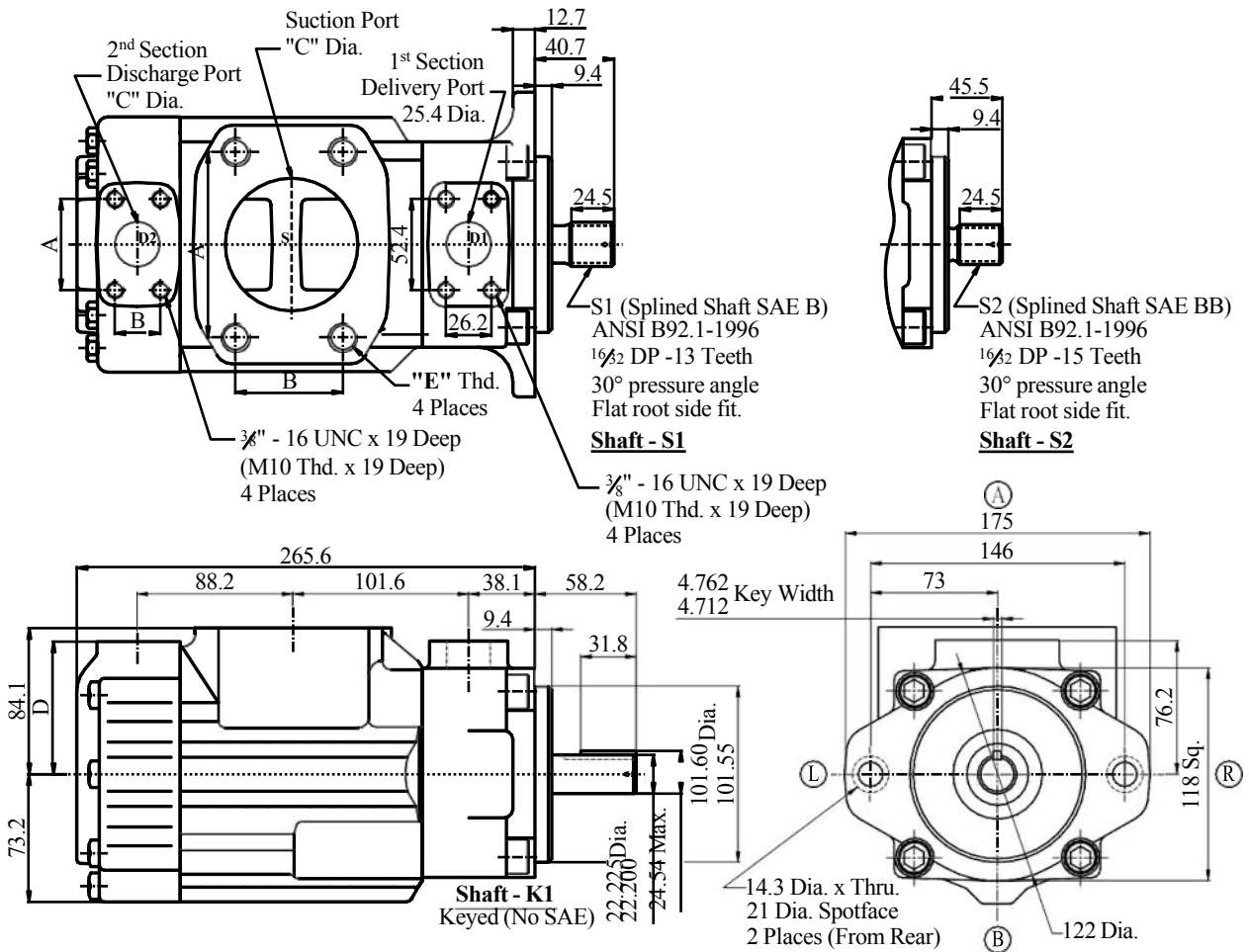
The above table does not include all combinations of cartridges available.

Only a few representative samples are shown.

HPV22M-**-**-**-**-**-**-**-10

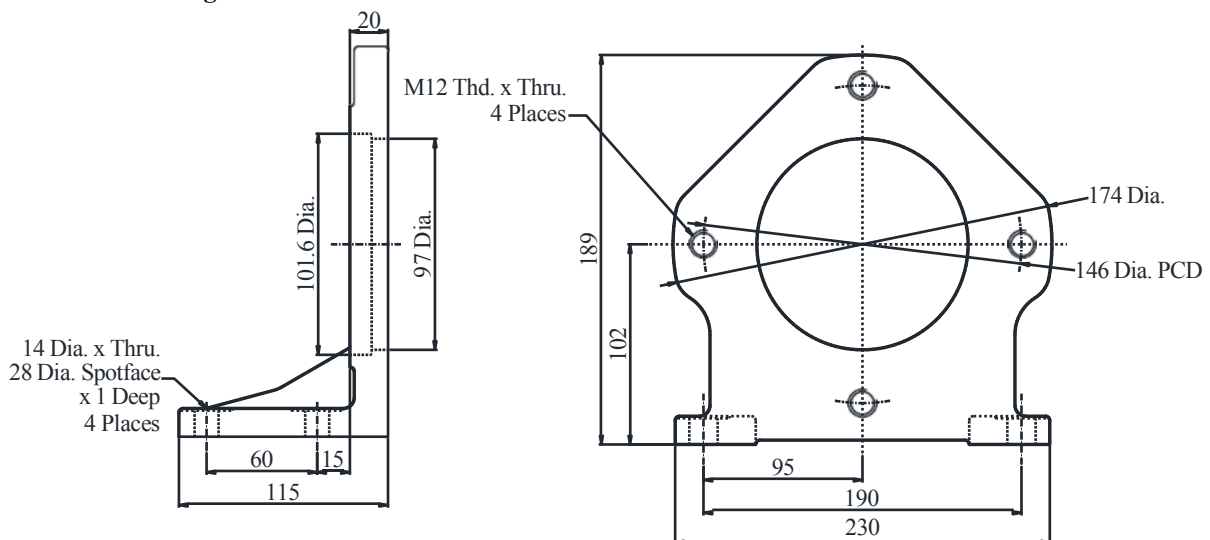
DIMENSIONS IN MILLIMETRES

Flange Mounting



Port	Port Connection	Port Size	A	B	C	D	E Thd.
S	U0,U1,M0,M1	3"	106.4	61.9	76.2	-	5/8 - 11 UNCx28.4 Deep (M16x28.4 Deep)
	U2,U3,M2,M3	2-1/2"	88.9	50.8	63.5	-	1/2 - 13 UNCx24.0 Deep (M12x24.0 Deep)
D2	U0,U2,M0,M2	1"	52.4	26.2	25.4	74.7	3/8 - 16 UNCx19.0 Deep (M10x19.0 Deep)
	U1,U3,M1,M3	3/4"	47.6	22.2	19.0	76.2	

Foot Mounting

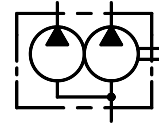


HPV32M SERIES – HIGH PRESSURE HIGH SPEED DOUBLE PUMPS

These double pumps consist of one HPV3 and one HPV2 series single pump combined in tandem within a single housing and driven by a common shaft. Fluid delivered from the two-separate ports can be either supplied to separate or common circuits. These HPV pumps are designed for High-pressure function. Suitable for mobile applications like Drill rigs, Railways & Construction Equipments.



Graphic Symbol



Specifications

Model Number	Geometric Displacement cm ³ /rev.				Max. Oper. Pressure Kgf/cm ²	Output Flow and Input Power	Shaft Speed Range r/min.		Mass (Approx.) Kg.	
	Series	1 st Section	Series	2 nd Section			Max.	Min.	Flange Mounting	Foot Mounting
HPV32M	14	47.6	03	10.8	275 ^{*1}	Ref. Page Nos. 179, 180, 181, 182, 186, 187 & 188	2500 ^{*2}	800	41.1	51.1
			05	17.2						
	17	58.2	06	21.3						
	20	66.0	08	26.4						
	24	79.5	10	34.1						
	28	89.7	12	37.1						
	31	98.3	14	46.0						
	35	110.0	15	50.5						
	38	120.3	17	58.3						
	42	136.0	20	63.8						
	45	145.7	22	70.3						
	50	158.0	25	79.3						
61	190.5	28	88.8							
		31	100.0							

^{*1} Different max. operating pressure for Small and Large Volume Pumps

As follows

- Small Volume Pumps Series 28, 31 is 210 Kgf/cm².
- Large Volume Pumps Series 50 is 210 Kgf/cm².
- Large Volume Pumps Series 61 is 120 Kgf/cm² max. intermittent, 80 Kgf/cm² continuous.
- All other Larger Volume Pumps are limited to max. pressure of 240 Kgf/cm².

^{*2} Tandem pumps with Large Volume Pumps of series 42, 45, 50, 61 is 2200 r/min. max.

Model Number Designation

HPV32M	-38	-17	-F	-R	A	A	A	-U0	-K1	-10
Model Number	Large Volume Pump Nominal Delivery	Small Volume Pump Nominal Delivery	Type of Mounting	Direction of Rotation	Large Volume Pump Discharge Port Position	Small Volume Pump Discharge Port Position	Suction Port Position	Mtg. W/ Conn. Variables	Type of Shaft	Design * Number
As Viewed From Shaft End										
HPV32M	14	03	F: Flange Mtg.	R: Clockwise (Normal)				M0, M1- Metric port connection (Refer table below) U0, U1- UNC port connection (Refer table below)	K1- Keyed (SAE-C)	10
	17	05								
	20	06								
	24	08								
	28	10								
	31	12	L: Foot Mtg.	L: Anti-Clockwise						
	35	14								
	38	15								
	42	17								
	45	20								
	50	22								
61	25									
	28							S1- Splined (SAE-C)		
	31							S2- Splined (No SAE)		

* Design numbers subject to change from 10 to 19, but installation dimensions remain as shown.

* For instructions regarding changing the port positions, consult CNIP INDIA LTD.

Mounting W / connection variables

Model Number	Mounting Type	1 st Discharge Port connection (D1)	2 nd Discharge Port connection (D2)	Suction Port connection (S)
HPV32M	M0	1 1/4"	1"	3"
	M1	1 1/4"	3/4"	3"
	U0	1 1/4"	1"	3"
	U1	1 1/4"	3/4"	3"

Flanges

Note: Please refer page no.178 for flange details.

Cartridge Kit Model Number

1st Section Large Volume Discharge Port

2nd Section Small Volume Discharge Port

CHPV32M	-38	-D1	-R	-10	CHPV32M	-17	-D2	-R	-10
Pump Series	Large Volume Nominal Delivery	Discharge Port	Shaft Rotation	Design Number	Pump Series	Small Volume Nominal Delivery	Discharge Port	Shaft Rotation	Design Number
CHPV32M	14	D1: 1 st Section Discharge Port (Big)	R: Clockwise (Normal)	10	CHPV32M	03	D2: 2 nd Section Discharge Port	R: Clockwise (Normal)	10
	17					05			
	20					06			
	24					08			
	28					10			
	31		12			L: Anti-Clockwise			
	35		14						
	38		15						
	42		17						
	45		20						
	50		22						
61	25								
	28								
	31								

* For instructions regarding replacing cartridge kit, consult CNIP INDIA LTD.

Hydraulic Fluids

Suction Pressure

Suction line pressure limit -0.20Kgf/cm² to +0.30Kgf/cm²

Cleanliness

Contamination level should be within NAS class 9. The return line must have a line type filter of under 10µm or there should be an offline/independent filtration unit in the system.

Alignment of Shaft

Employ a flexible coupling whenever possible & avoid stress from bending or thrust. Maximum permissible misalignment is less than 0.1mm(0.004Inches) TIR & maximum permissible misangular is less than 0.2°.

Instructions

Precautions at starting

At an initial operation or at an operation after a long rest, the pump may have difficulty in sucking up fluids. In such cases, an air bleed valve should be installed before hand in the discharge side (Model No.ST1001-※-10※), or discharge air by slightly slackening the connection on the discharge side. At starting, operate the pump intermittently as far as possible with no load.

Other Precautions

If a pump is used at speed below 1200 r/min, install the pump with the suction port upside so that the pump can suck up fluid easily at starting.

Spare Parts List

List of Seals

Sl. No.	Name of Part	Part Number	Qty.
1	O-Ring	PKH4-0205	1
2	O-Ring	PKH4-0206	1
3	O-Ring	PKH4-0208	1
4	O-Ring	PKH4-0209	1
5	O-Ring	PKH4-0210	1
6	O-Ring	PKH4-0211	1
7	Backup-Ring	PKH4-0184	1
8	Backup-Ring	PKH4-0185	1
9	Oil Seal (NOK)	34.9x57.15x8.3	1

Note : When ordering the seals, please specify the seal kit number KS-HPV32-10.

Foot Mounting Parts

Sl. No.	Name of Part	Part Number	Qty.
1	Mounting Bracket	PK2-10182-3	1
2	Socket Head Cap Screw	M16 x 45 Lg.	2
3	Spring Washer	WS-A-16	2

Note : When ordering the Foot Mounting Parts, please specify the Kit number HPV32-L-10.

Typical pump characteristics curves

Ref. Page Nos. 179 ,180, 181 & 182,186,187 &188

Cartridge Kit Model Number

Pump Model Numbers	Cartridge Kit Number #	
	Small Volume Pump	Large Volume Pump
HPV32M-*-05-※-RAAA-※-※-10	CHPV32M-05-D2-L-10	CHPV32M-*-D1-R-10
HPV32M-*-08-※-RAAA-※-※-10	CHPV32M-08-D2-L-10	
HPV32M-*-12-※-RAAA-※-※-10	CHPV32M-12-D2-L-10	
HPV32M-*-15-※-RAAA-※-※-10	CHPV32M-15-D2-L-10	
HPV32M-*-20-※-RAAA-※-※-10	CHPV32M-20-D2-L-10	
HPV32M-*-25-※-RAAA-※-※-10	CHPV32M-25-D2-L-10	

* For instructions regarding replacing cartridge kit, consult CNIP INDIA LTD.

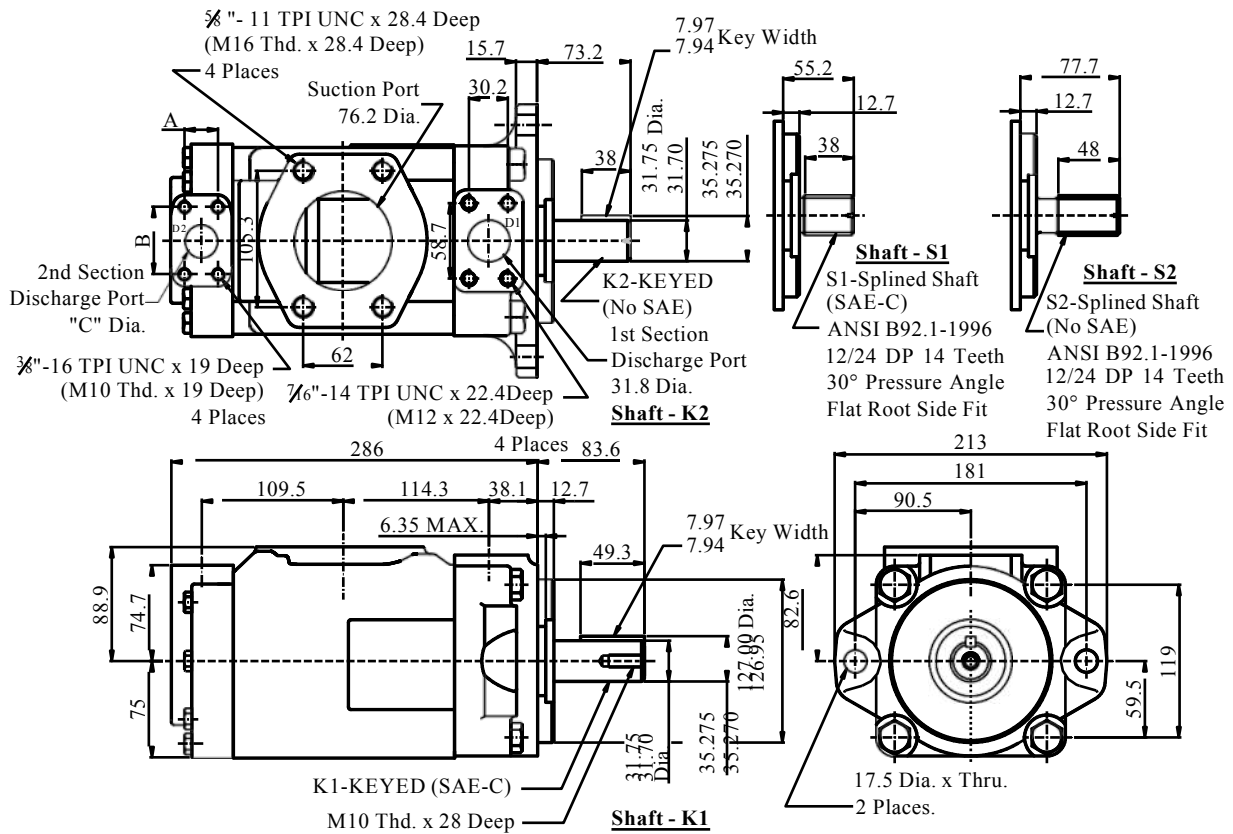
The above table does not include all combinations of cartridges available.

Only a few representative samples are shown.

HPV32M-**-**-**-**-**-10

● Flange Mounting

DIMENSIONS IN MILLIMETRES



B
HPV Series
Double Vane Pumps

Alternate Connect. Variables

	U0 & M0	U1 & M1
A	26.2	22.2
B	52.4	47.6
C	25.4	19.05

● Foot Mounting

